

# Cast Lines

## For Stretch Film Co-Extrusion

Amut offers advanced cast lines for stretch film production, using the precise and efficient process of cast extrusion. These lines are engineered to meet rigorous standards of quality and operational efficiency, ensuring consistent performance and reliability. Designed for versatility, they cater to diverse industrial applications where dependable packaging solutions are essential for product protection and logistics efficiency.

- Collaboration with film producers and polymer suppliers for comprehensive raw material testing and recipe development.
- Capable of high production speeds exceeding 800 metres per minute.
- Customised line concepts tailored to meet individual customer and market needs.
- Features high-quality winding of ultra-thin films using idle winding shafts without motors, ensuring superior winding control.
- Compact design for optimised floor space utilisation, offering operational efficiency without compromising performance.

Amut's commitment to innovation and customer-centric solutions ensures that their cast lines for stretch film deliver superior quality and performance, meeting the evolving demands of the packaging industry effectively.

### Key Features

- Advanced extrusion technology
- High-speed production capability
- Precision thickness control
- Versatile configurations available
- Energy-efficient design
- User-friendly interface
- Robust construction for durability
- Integrated quality monitoring systems

### Key Benefits

- Consistent film quality
- Increased production output
- Reduced material waste
- Enhanced operational efficiency
- Lower energy consumption
- Easy maintenance and cleaning
- Reliable performance in diverse conditions
- Compliance with industry standards

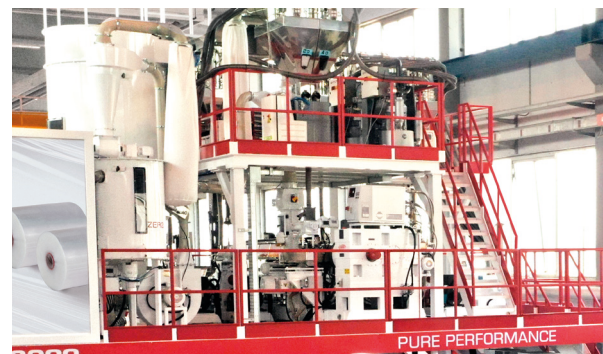
## GET IN TOUCH TODAY

We solve the most technically advanced plastics automation problems across all industries.



### Accessories

- Automatic roll changing systems
- Inline thickness measurement systems
- Edge trim recycling systems
- Corona treaters
- Web guiding systems
- Automated packaging systems





## Cast Lines for Strech Film

Technical Data		ACS-1500	ACS-2000	ACS-3000	ACS-4000	ACS-4500
Film Width	mm	1500	2000	3000	4000	4500
Polymers		LLDPE	LLDPE	LLDPE	LLDPE	LLDPE
Number of Layers		3 - 5	3 - 5 - 7	3 - 5 - 7	3 - 5 - 7	3 - 5 - 7
Number of Extruders		3 - 4	3 - 6	5 - 9	5 - 9	5 - 9
Net Output*	kg/h	700 - 1050	1000 - 1600	1200 - 2800	1200 - 3500	1500 - 4000
Rolls Diameter	mm	min. 80	min. 80	min. 80	min. 80	min. 80
Weight of Rolls in winding	kg/h	max. 50	max. 50	max. 50	max. 50	max. 50
Shaft Diameter	mm-in	50 - 2" 76 - 3"	50 - 2" 76 - 3"	50 - 2" 76 - 3"	50 - 2" 76 - 3"	50 - 2" 76 - 3"
Thickness Range	μ	7 - 40	7 - 40	7 - 40	7 - 40	7 - 40
Max Mechanical Speed	m/min	800	1000	1000	1000	1000

\* Net output depends on thickness and type of resin.

### Extruders:

AMUT's cast lines feature 40 L/D and 35 L/D extruder models, specifically designed for low energy consumption while achieving higher revolutions per minute (rpm), an extended length-to-diameter (L/D) ratio, and superior material homogenisation. The extruder barrels are equipped with ceramic heaters or infrared lamps, and the drives for the extruder motors are water-cooled, ensuring efficient operation and durability.

### Automatic Flat Die and Feedblock:

The die, designed in-house, enhances material performance and ensures a smooth melt flow of resins without gels. The exterior of the die body is flash-plated to facilitate maintenance and prevent oxidation. Various feedblock designs are available, supporting the production of different multi-layer configurations, providing flexibility in the manufacturing process.

### Chill Roll:

The twin-type chill roll units feature solutions with roll diameters of 1,500mm and 450mm. They utilise a kamber roll type web edge guide and incorporate an integrated thickness gauge system with X-ray or infrared technology. The film path is minimised to facilitate the achievement of high speeds, enhancing production efficiency.

### Trims Recovery System – Roto-Feed:

The in-line trims recycling is efficiently managed by the Roto-Feed unit, which is installed on the main extruder. This system is designed to melt and compact the fluff with the virgin resin through a cold process,

capable of reclaiming up to 50% of the extruder's output. It operates on a management algorithm, negates the need for a re-granulation process, and ensures that there are no gels in the film. The system also features auto-cleaning filters and is noted for its minimal energy consumption, with only 5 kW of installed power required for trim reclaiming.

### Zero Scrap System:

The Zero Scrap system is a unique feature that automatically collects all scraps produced during start-up and slowdown phases, eliminating the need for external bags to accumulate the fluff. This dust-free process ensures that the collected fluff is 100% reclaimed into the main extruder in a closed loop. Even the start material can be reprocessed in-line, contributing to waste reduction and efficiency.

### Winder – Prowind Model:

All models of the Prowind winder are capable of winding hand, machine, and jumbo rolls, producing slit-in-line rolls with perfect shape and no tail. The technical features of the Prowind model include a reduced indexing cycle time of down to 20 seconds and an absence of pneumatic or hydraulic components. The contact roll pressure is adjusted electrically, and all rolls in contact with the film are coated with a special material to increase grip and eliminate air trapping. Each finished roll is weighed before being conveyed to the packaging unit. The winder also supports ultra-fast and easy roll changes, accommodating 2" to 3" cores and vice versa. Speed synchronisation of the incoming air shaft is achieved using a magnetic field, without direct motor contact, thus avoiding friction. Core loading from the core storage is executed in a single operation, ensuring efficient and streamlined production.

Summit Systems assumes no responsibility for any errors or inaccuracies in this literature and reserves the right to make changes without prior notice.